

Pavilion of Infinity

THE [VOID] - THE INFINITE DIMENSION UNFOLDED FROM WITHIN THE PHYSICAL BOUNDARY

THE PAVILION REPRESENTS A CITY WITH A PHYSICAL BOUNDARY SLASHED TO UNFOLD ITS INFINITE DIMENSION - THE IMAGINATION [VOID] WHERE IDEAS CAN GO BEYOND ANY PHYSICAL BOUNDARY. THIS IMMENSE [VOID] WITHIN THE TIGHTLY INTERWOVEN CITY FABRIC OF HONG KONG IS WHERE THE BOUNDLESS POTENTIAL OF A DYNAMIC CITY IS REVEALED.

MATERIALS & SUSTAINABILITY

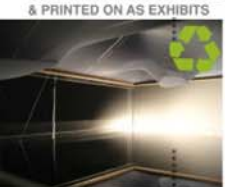
HIERARCHY OF EXHIBITS



POLYETHYLENE NON-WOVEN TEXTILE TO GIVE A SENSUOUS SKIN FOR THE PAVILION :



TRANSLUCENT MEMBRANE TO PROVIDE A SMOOTH INNER LAYER ALSO AS SCREENS FOR PROJECTIONS & PRINTED ON AS EXHIBITS



REFLECTIVE MEMBRANE AS SKY & GROUND FOR [VOID]



THE DOUBLE SKIN

3rd LAYER - SUNDECK - ENVISAGED FUTURE THEMATIC COMPONENTS - SUSTAINABLE QUALITY CITY LIFE



PROGRESSION



ONENESS WITH NATURE



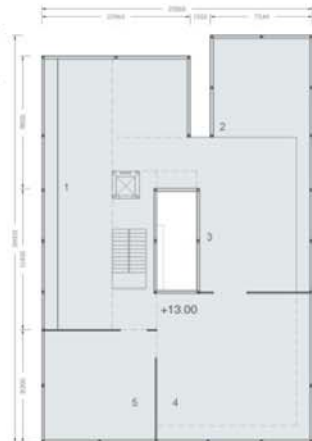
UNBOUNDLESS IMAGINATION



VIBRANT BUILT CITY



TIGHTLY INTERWOVEN CITY FABRIC GENERATES THE PLAN FOR THE PAVILION, WITHIN WHICH THE BOUNDLESS POTENTIAL OF A DYNAMIC CITY IS REVEALED



- 1 ELONGATED VIDEO WALL
- 2 OPEN AIR GREEN CORNER
- 3 VIDEO WALL
- 4 VIDEO ROOM



THE [VOID] DIVIDES THE PAVILION INTO THREE LEVELS AND THE EXHIBITS ARE DISPLAYED IN ACCORDANCE TO THE HIERARCHY/ LEVELS OF CITY DEVELOPMENT, CORRESPONDING TO THE SIX THEMES OF THE HONG KONG PAVILION.

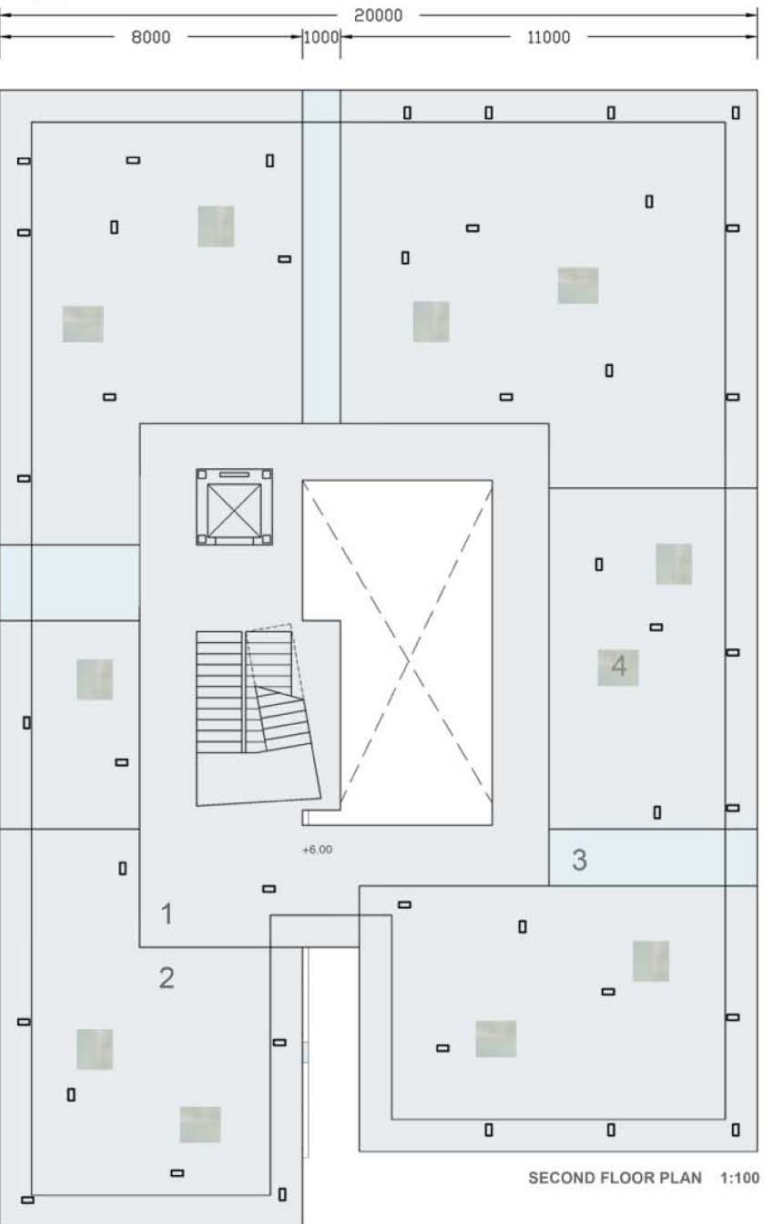
THE CONTRAST OF THE THREE LEVELS OF EXHIBITS IS TO CALL UPON THE VISITORS TO RE-THINK ON THE POSITIONING OF A CITY, AND THE DEFINITIONS FOR A BETTER CITY AND A BETTER LIFE.



FROM THE INTERMEDIATE INFINITE [VOID], VISITORS ASCEND TO JOIN THE TRUE BEAUTY OF THE REAL WORLD . ON THIS NATURALLY VENTILATED AND LIT UP SUN DECK SHLETERED BY MEMBRANE CEILING IS DISPLAYED LIVE VIDEOS OF HONG KONG'S SPLENDID OUTSKIRTS AND NATURAL WONDERS. THIS CONNECTION TO NATURE IS REGARDED AS AN UNIVERSAL URGE OF HUMAN BEINGS & THE SOURCES & POWER FOR CREATIVITY.

A VIDEO ROOM ALSO FEATURES PROGRAMMES ON URBAN RENWAL AND VISIONS FOR FUTURE GREEN CITIES.



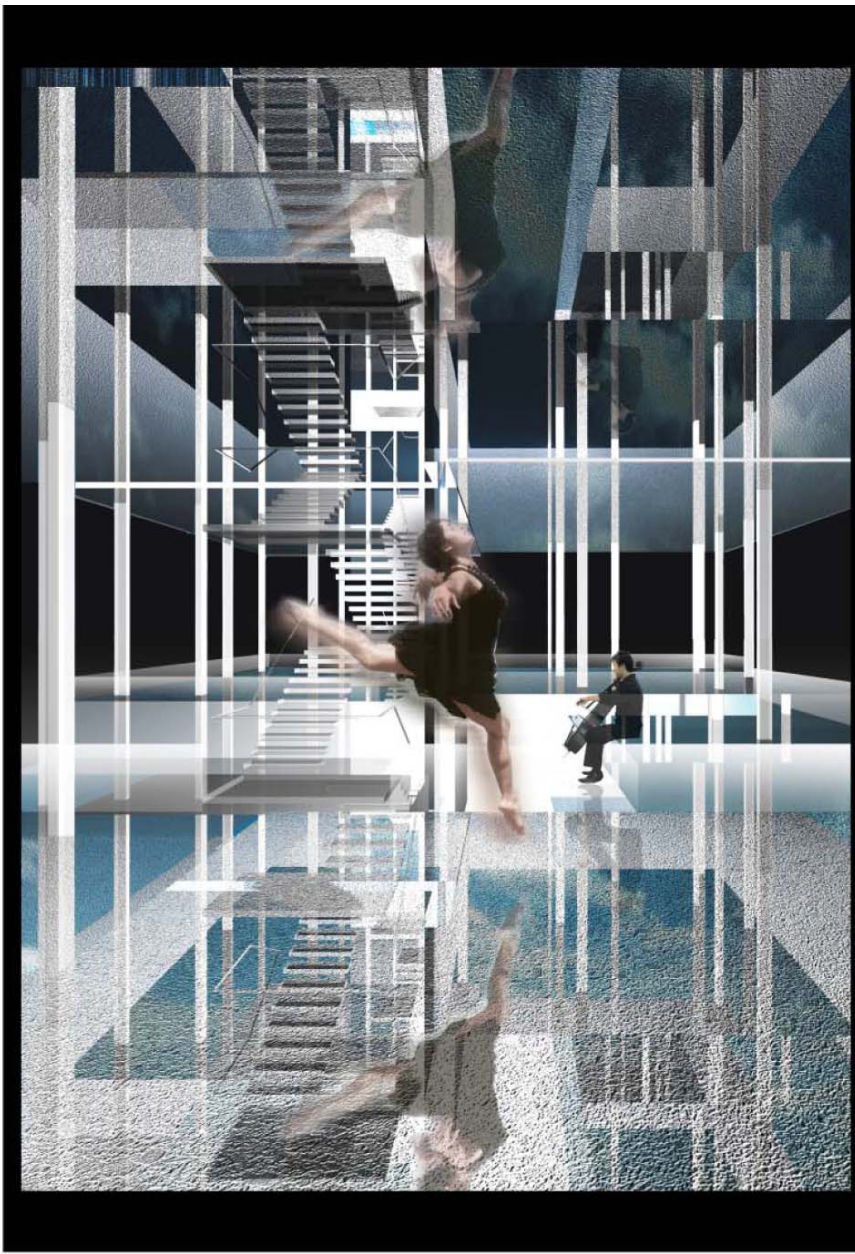


SECOND FLOOR PLAN 1:100

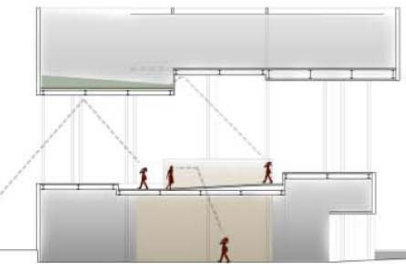
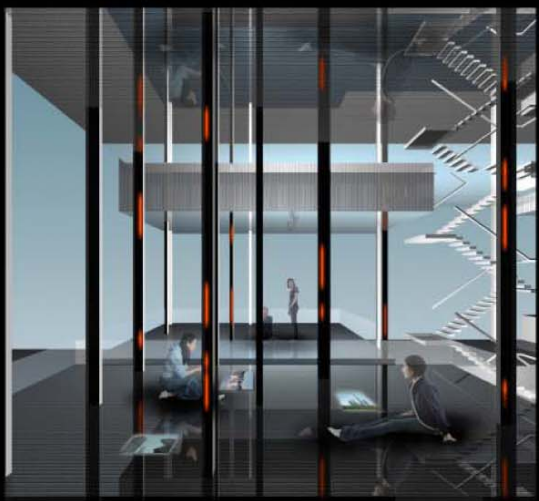
- 1 NON SLIPPERY FLOORING
- 2 PLATFORMS WITH REFLECTIVE MEMBRANCE ON RECYCLED RUBBER
- 3 SKYLIGHT
- 4 LCD DISPLAY

2nd LAYER - THE [VOID] - INFINITE CREATIVITY
 THEMATIC COMPONENTS: ADVANCED INFORMATION TECHNOLOGY/
 FINANCIAL & TRADING SYSTEM/ CULTURAL DIVERSITY & CREATIVITY

GOING FURTHER UP, VISITORS EMERGE FROM THE ENCLOSED EXHIBITION ROOMS TO THE OPEN UNDULATING LANDSCAPE & THE INFINITE VISUAL SPACE. THE REFLECTIONS GENERATED BY REFLECTIVE PLATFORM & SKY SYMBOLIZE THE INFINITE NATURE OF CREATIVITY THAT WOULD BE UNFOLDED WITHIN THIS INTERACTIVE SPACE.



THE UNDULATING LANDSCAPE, MADE OF RECYCLED RUBBER COVERED WITH REFLECTIVE MEMBRANE, IS EMBEDDED WITH INTERACTIVE MONITORS AND SHOWCASES. IT PROVIDES AN OPEN EXPLORATIVE PLATFORM FOR VISITORS, AND AN LARGE OPEN PLATFORM FOR THE PERFORMANCES OF ART OF THE VARIOUS CULTURES IN THE CITY.



VISITORS WILL FIRST GET A TASTE OF THE DENSE FITY FABRIC OF HONG KONG BY INTERMINGLING AMONG THE "EXHIBITION BLOCKS" & WALKING THROUGH LARGE SCALE MODELS OF THE CITY SUPERSTRUCTURE AND INFRASTRUCTURAL CONNECTIONS WITH THE MAINLAND CHINA AND THE WORLD.

THROUGH THE CENTRAL LANE AMONG THE "EXHIBITION BLOCKS", THE VISITORS WILL GET A GLIMPSE OF THE [VOID] ABOVE.

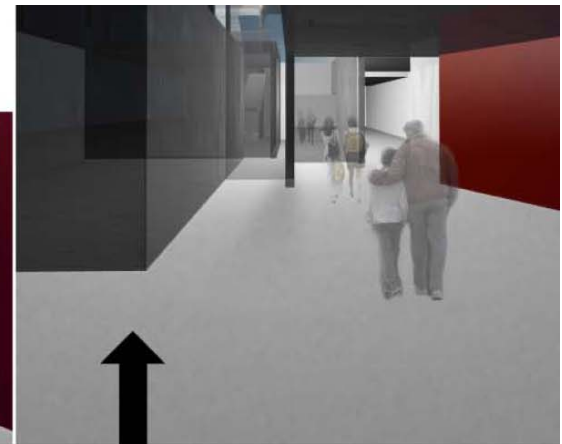


- 1 ENTRANCE
- 2 RECEPTION & CLOAK ROOM
- 3 VIP ROOM
- 4 EXHIBITION AREA
- 5 TOILET
- 6 STORE
- 7 M&E ROOM
- 8 SOUVENIR



GROUND FLOOR PLAN 1:300

PROGRESSION



PROGRESSION

THE SLASH ON THE PAVILION & THE [VOID] UNFOLDED AROUSES THE CURIOSITY & IMAGINATION OF VISITORS FROM DISTANT. THE PAVILION'S SENSUOUS SKIN MADE OF POLYETHYLENE NON-WOVEN TEXTILE WAVES WITH WIND AND SUBTLY ALTERATING ITS TEXTURE AND LIGHTING, ADDS A DIMENSION ON THE INTANGIBLE RELATIONSHIP BETWEEN MAN & NATURE.

1st LAYER -
THE INTERWEAVING CITY
 THEMATIC COMPONENTS : EXCELLENT INFRA-STRUCTURE & CONNECTIVITY WITH MAINTLAND CHINA & WORLDWIDE / WELL-CONNECTED & EFFICIENT DOMESTIC TRANSPORTATION



DESIGN STATEMENT

The Preciousness Void

The pavilion represent **a city with a physical boundary slashed to unfold its infinite dimension** - the **imaginative "VOID"** where ideas go beyond any physical boundary. Within this VOID, the boundless potential and diverse faces of a dynamic city are unlaced for everyone to explore.

The VOID to attract - The void forms a **distinctive visual element** on the pavilion's appearance and arouses curiosity and imagination at distant.

The VOID to Connect - The pavilion as the simplest structure by which man positions himself in the natural environment has **universal meanings** across culture and time. In our design the VOID in the pavilion symbolizes a VOID of connection - to connect different races, past & future, man and nature, physical and super-physical.

Hierarchy of Development around the VOID - the VOID divides the pavilion vertically into three layers in an ascending levels of the city development of Hong Kong - from the city built environment and infrastructure, to the infinitive creativity, and on the top to the envisaged future for a green sustainable environment. Each level employs **distinctive illustrative means** to exhibit the corresponding themes as detailed below.

Area Summary

Exhibition halls are located at G/F, 1/F and 2/F, with total area =approx. 1000sq.m. The VIP reception area(approx 50 sq.m), souvenir counter, office and plant room are located at office at ground floor.

COMMUNICATIVE OBJECTIVES

The Pavilion is to **share** with world-wide visitors **the enchanted and precious qualities of the Hong Kong City** - its compactness, vibrancy and convenience, the ability and creativity to transcend limitations and constraints into potentials and advantages, and its endowment of a splendid nature which all form integral parts of the balanced and quality city life of Hong Kong. Above all, the pavilion is to bring out **the vision for a better life and a better city through the intricate interplay among the three levels of the city development.**

3 Layers of Experiences - The pavilion takes on a form of **3** main layers to illustrate the above:

1st layer – City Fabric & Infrastructure

Visitors entering from the plaza, will first get **a taste of the dense city fabric** of Hong Kong by walking through **large scale models** of the existing and future superstructure and infrastructure connections with the mainland China and the world.

2nd layer – Infinitive Creativity & Idea Exchange

Going further up, visitors will emerge from the more enclosed environment to the open intermediate landscape layer. The **infinite reflections** generated by the reflective membranes on its sky and ground symbolize the infinitive nature of creativity that is to be unfold within this interactive space. **The undulating landscape is embedded with interactive screens and showcases** displaying the open and sophisticated financial and trading system, high information technology and the embodiment of highly diversified cultures. **LED lights** embedded onto the structural columns interact with the screens to turn the VOID into a transparent space for information exchange. The platform is also a **large open area for performances and cultural exchange.**

3rd layer – Envisaged Future

Up from the VOID to the uppermost layer, visitors are received with the true beauty of the physical world. Under sunscreens with **gentle natural light and ventilation** are large projections of **real-life videos of the natural wonders** of Hong Kong. A video room also features documentaries on the Hong Kong's **urban renewal and sustainable city development.**

Through the distinct experiences through the three levels, the visitors are called to rethink on the position of cities and the true meaning of better city and better life.

SUSTAINABLE DESIGN

Sustainable designs are employed throughout the pavilion in the following aspects:

Material and construction - this 6-month pavilion takes a lightweight, prefabricated and demountable **steel-frame structure** composed of mainly **recycled/ recyclable/ reusable materials.**

Double-layer skin is employed to give high insulating performance. The outer layer is made of **polyethylene non-woven textile** which forms the **sensuous appearance** of the pavilion and also acts as an insulating layer. The inner layer is **recyclable membrane sheeting** to provides thermal and sound insulation while forming a smooth translucent surface for the interior exhibition spaces and acts as screens for projections and printed on for exhibitions. This translucent sheeting will also be used for the sun-screens on the upper sun deck. Reflective sheeting will be employed for the ceiling and the platforms of the middle "VOID". Both skins are highly durable and the membrane is also highly reusable for other exhibition projects after the exhibition period.

The pavilion from inside out enables a delighting and refreshing experience and interaction with nature/ environment which is the essence and the beauty of the pavilion.

