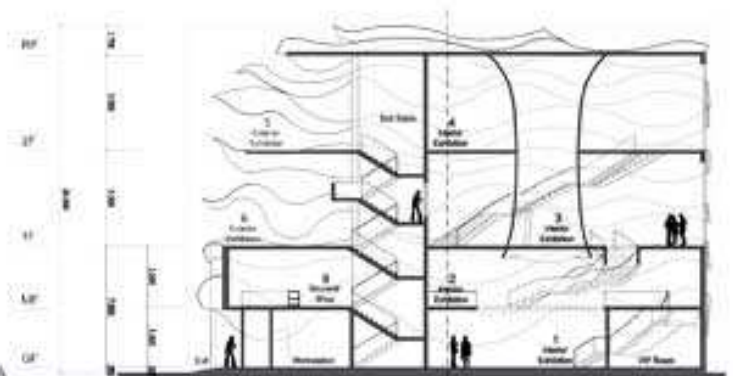


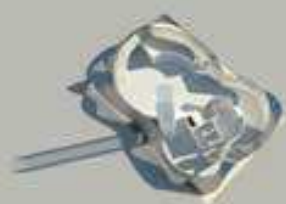
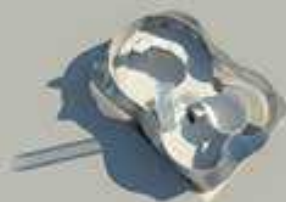
SIDE FACADE

SECTION A

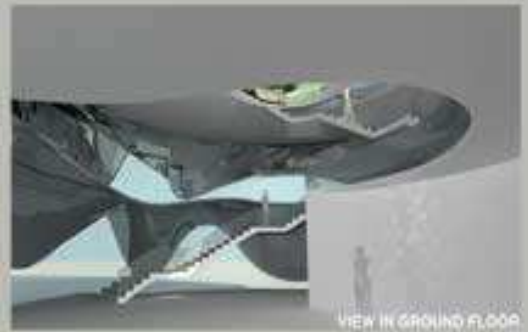


CIRCULATION VIEWS

The walking circulation is made by one way only, i.e., enter to the pavilion, going up while seeing the exhibition and going out, without turning back through the same way. It is not through a set staircase to a higher go back to some moment of the pavilion exhibition, the pavilion is prepared for 10 people can reach and see the art in all the floors and go to any floor. The exhibition can be seen entirely by the design people, show the 3D model as a common "base" between all the floors. One of the objectives, considering with the circulation, was to increase the character of the interaction of the exhibition in a way that visitors should see the exhibition from various perspectives - reason why the stairs are not in the same place between each floor, and even the return stairs that leads to the 1st floor is visible to leave the 1st floor.



VIEW IN MEZZANINE FLOOR



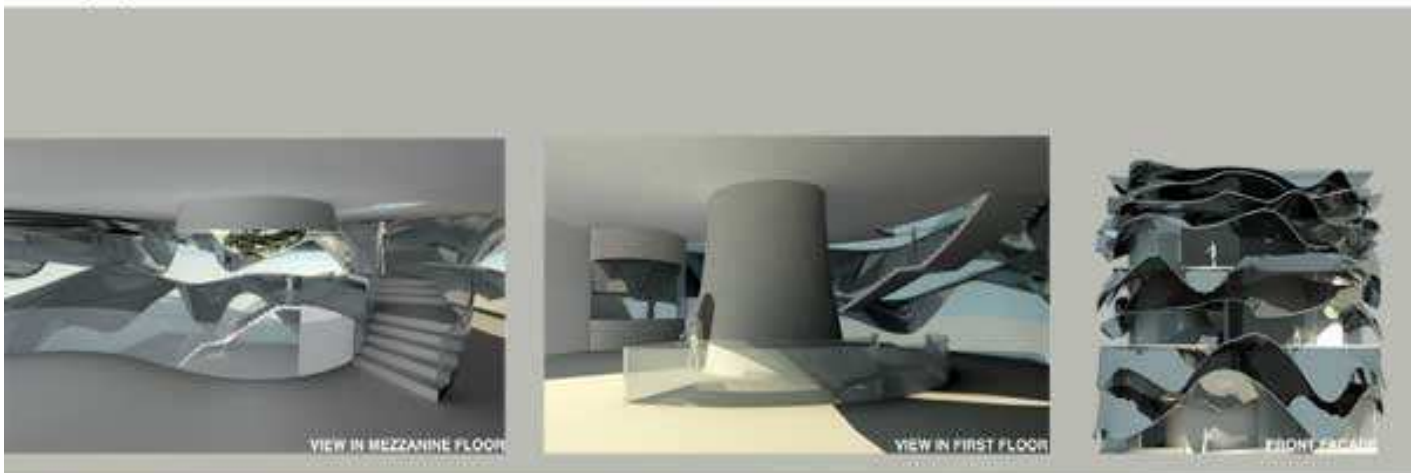
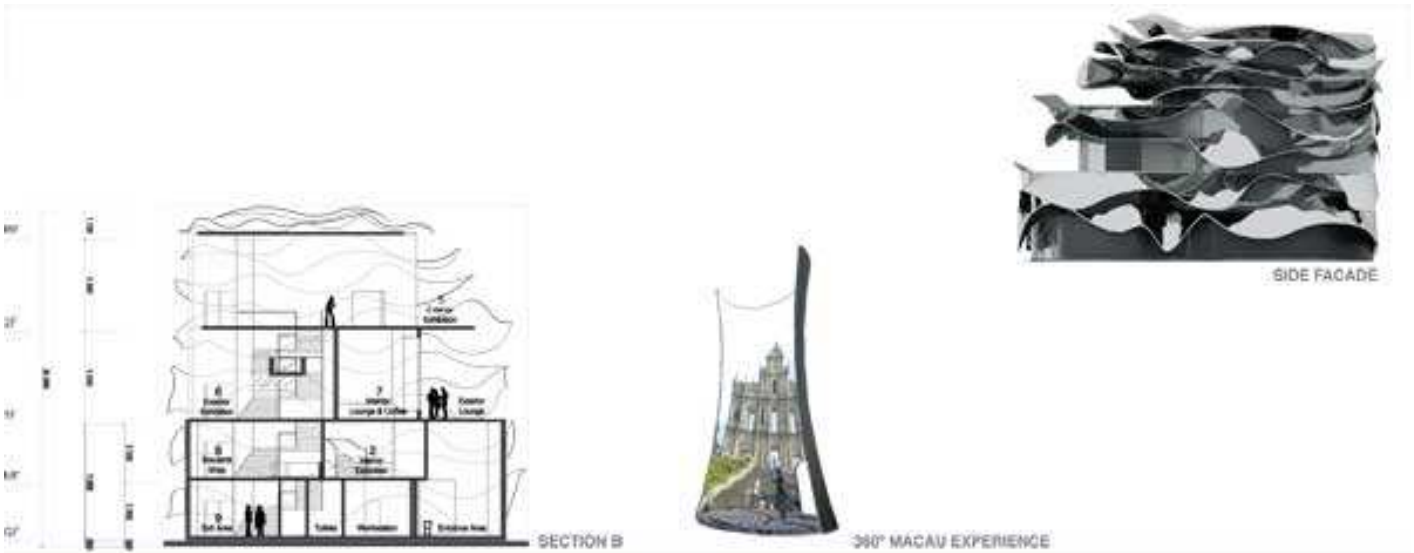
VIEW IN GROUND FLOOR



VIEW IN ENTRANCE



MAIN ENTRANCE



Source: www.gov.mo